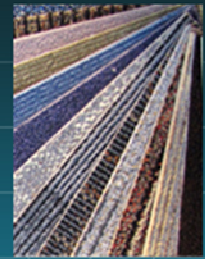
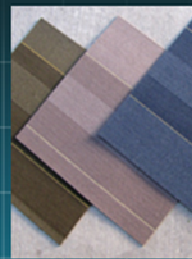
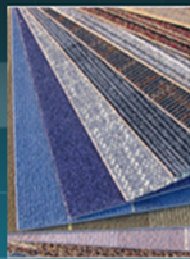


CARPET TILES 1

A Division of Perry Properties Pty Ltd
ABN 40 143 451 177

Web: <http://www.carpettiles1.com.au>
Email: info@carpettiles1.com.au



Product specification: Carpet Tiles 1

Vinyl Click & Lock Planks

15cm x 94cm x 5mm - Including Engineered Edge

Material and Mark:	Vinyl Flooring,
Dimensions:	15cm X 94cm X 5mm EN427 / ISO 24342:2007: Pass
Actual Surface Area:	14.5cm X 93.5cm X 5mm
Dimensional Stability:	EN434 / ISO 23999:2008: Pass
Tile Height (Overall Thickness):	5 mm EN428 / ISO 24346:2006: Pass
Flexibility:	EN435 / ASTM F137-03 / ISO 24344:2008: Pass
Mass per unit area:	Approximate 9.773 kg/m ²
Tensile Strength:	UP to 1450lbs/sq.inch
Tested to ISO:	ISO 9239-1:2010 Reaction to Fire tests for flooring – Part 1: Determination of the burning behaviour using a radiant heat source.
Flammability:	Passes (GB/T11785-89/ASTM E648/ISO 10595:2010: ≥45watt/cm-class1)
Heat Resistance:	ASTMF 1514 / ISO 10595:2010: Pass
Smoke Density:	Passes (DIN4102/ASTM D2843-99/ISO 10595 2010: Class B1)
Smoke Development Rate per Building Code of Australia 2010 (in % x min):	≤750 percent minutes
Curling after Exposure to Heat:	EN434 / ISO 23999:2008: Pass
Electrical Resistance:	EN 1081 method C: Pass
Sound Reduction:	DIN52210 / ISO 15712-1:2005: 4db

**** Continues next page. ****

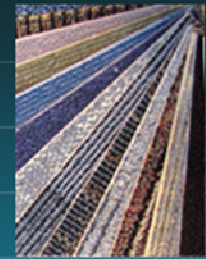
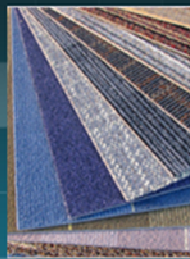
P: (02) 9519 8785 or
M: Vince Perry Direct - 0414 266 267
F: (02) 9519 9810
Email: info@carpettiles1.com.au

Office, Warehouse & Display:
3-9 Cook Road,
Marrickville NSW 2204

CARPET TILES 1

A Division of Perry Properties Pty Ltd
ABN 40 143 451 177

Web: <http://www.carpettiles1.com.au>
Email: info@carpettiles1.com.au

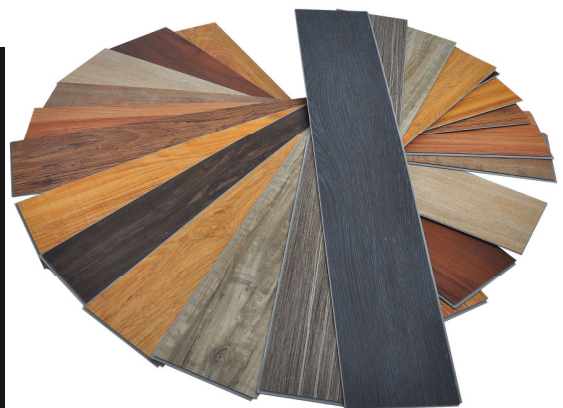
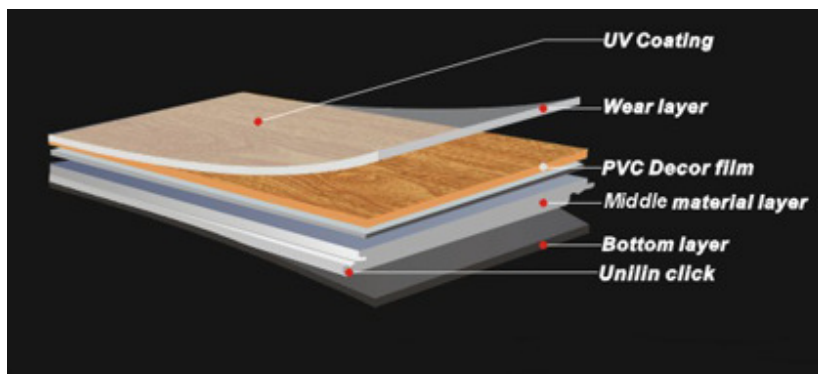


Product specification: Carpet Tiles 1

Vinyl Click & Lock Planks – Continued.

15cm x 94cm x 5mm - Including Engineered Edge

Chemical Resistance:	EN423/ ISO 26987:2008: Pass
Thermal Conductivity:	0.186watt/mk
Castor Chair Resistance:	EN425/ ISO 4918:2009: Pass
Residual Indentation:	EN 433/ ISO 24343-3:2011: Pass
Abrasion Resistance:	EN660-2 (Volume Loss) ISO 10595:2010: 6.94mm ³ /100r
Slip Resistance:	ASTM C-1028 ADA / AS/NZS 4586:2004: Pass
Mean overall acceptance angle:	13.3°
Slip Resistance assessment group:	R10
Wear Group Classification (1.00mm):	EN649 / ISO10595:2010: Class 33, 42
Light Stability:	ISO 105 B02:6 or above



P: (02) 9519 8785 or
M: Vince Perry Direct - 0414 266 267
F: (02) 9519 9810
Email: info@carpettiles1.com.au

Office, Warehouse & Display:
3-9 Cook Road,
Marrickville NSW 2204